

EverGreen
Industries, Inc.

4976 MS-Hwy 24
Liberty, MS
601-657-8783



“DRIVER STRONG”

Personal Conveyance & Hours of Service

What is PC?

- Personal conveyance is the movement of a commercial motor vehicle (CMV) for personal use while off-duty.
- Examples: getting food, going to see a movie on your 34, getting to an emergency safe haven, and so on.

PC is optional, why do we allow it?

- We want our drivers to have the most comfort on the road that they can.
- We want you to be able to go to the grocery store, out to eat, and handle other personal tasks that help you stay healthy and relaxed while over the road.
- This comes with TRUST and RESPONSIBILITY.

EverGreen
Industries, Inc.

Examples of right and wrong PC usage.

Correct Usage

- Driving to a safe haven after being held past your hours at a shipper or receiver.
- Going to see a movie on your 34.
- Going to the grocery store.
- Going to do laundry.

Incorrect Usage

- Running your clock all the way out until you're forced to use PC to get to a truck stop.
- Running over your hours.
- Getting loaded.
- For yard moves after your hours are up.
- Advancing your day for monetary gains.

What happens if I use PC or HOS incorrectly?

- If you get into a wreck, you are automatically ruled to be at fault. Possibly facing criminal charges.
 - A case in Florida settled for \$1 Billion dollars in a fatality that occurred with a CMV rolling past HOS and the driver actively using a cell phone.
- Being placed out-of-service and receiving a large fine.
- Being issued a DOT violation that damages your CSA scores.
- Loss of safety bonus.

EverGreen PC Policy

- PC usage should be kept to a minimum during the work week.
- Must go to nearest safe haven if held over at a shipper.
 - This means if the closest is in the opposite direction from your next destination, you must choose it.
- Cannot use PC for yard moves.
- PC usage should not be habitual. Do not lose this privilege!

Hours of Service (HOS)

- This is based on actual academic research to determine what is the threshold of impairment from fatigue.
- HOS can protect yourself as well as other on the road.
- ELD's take the challenge out of HOS by doing the math.
- HOS violations are serious, and EverGreen will see that HOS rules are followed. Violations will be addressed when reviewing your logs.

Case Study: 1991 Catastrophic Accident

EverGreen
Industries, Inc.

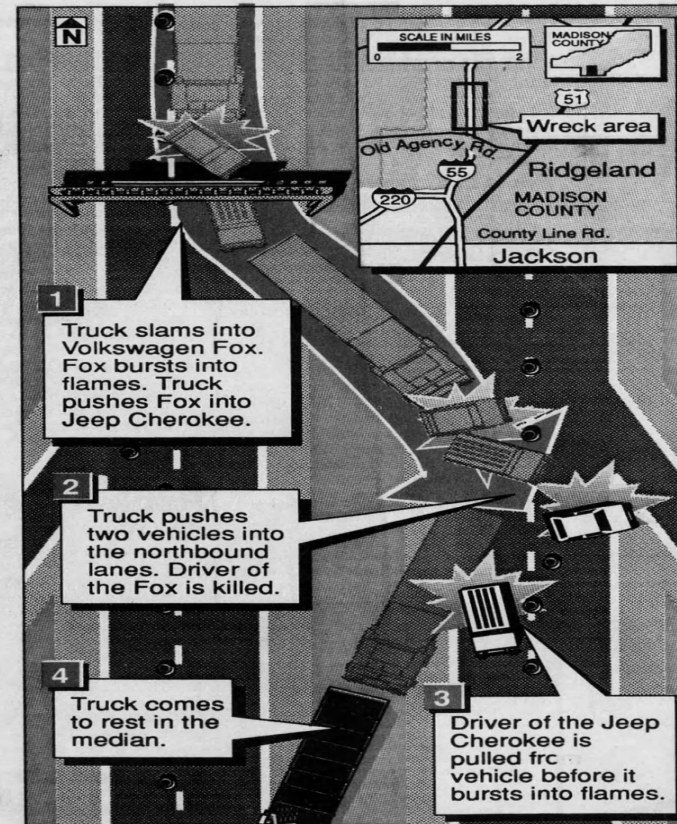


Greg Jensen/The Clarion-Ledger

One man died and two people were injured in an 8:26 a.m., seven-vehicle accident Thursday on I-55 just north of the Old Agency Road exit in Ridgeland. Emergency rescue crews and authori-

ties from the Mississippi Highway Patrol, the city of Ridgeland and Madison County work to clean the interstate and determine the cause of the accident.

1 dead, 2 hurt in 7-car I-55 crash



Godfrey Jones/The Clarion-Ledger

■ The chain-reaction accident began with an 18-wheeler that didn't stop, police say.

By Carole Lawes
Clarion-Ledger Staff Writer

RIDGELAND — A 26-year-old man was killed when his car was crushed beneath the tractor of an 18-wheeler in a fiery, seven-vehicle crash Thursday, police said.

William R. Cooper of Madison, director of Canton's Redevelopment Authority, died and two others were injured in the chain-reaction wreck on I-55 southbound near the Old Agency Road exit, police said.

"One car came to a stop for traffic to merge," said Ridgeland Police Sgt. Norman Sipp. "It appears that the truck didn't notice that the traffic had stopped."

Witnesses said the truck slammed into Cooper's Volkswagen Fox. The small car burst into flames before the truck pushed it into a 1990 Jeep Cherokee.

The Cherokee, driven by Andy Dyess, 28, of Madison, burst into flames after the truck shoved it and the Volkswagen across the grassy median into northbound lanes of the interstate, witnesses said.

Dyess kicked out his windshield, and passersby helped pull him out, witnesses said. He was treated for head injuries at Mississippi Baptist Medical Center and released.

"He's got cuts and scrapes and bruises all over him," said Kevin D. Lewis, a Jackson lawyer who represents Dyess. "We don't know how much he's going to be hurt."

Dyess doesn't know what caused the wreck, Lewis said. "He looked back in his rearview mirror, and he saw a ball of fire being pushed towards him," Lewis said.

Lewis blamed the wreck on the truck driver, David Anderson, 30, of Morriston, Tenn.

"I've never had a wreck. I've never had a speeding ticket," Anderson said. He told police, "I hit my brakes."

Canton hired Cooper 1½ years ago after he got a master's degree in public policy and administration at Mississippi State University, said Madison County Redevelopment Authority executive vice president Duke Loden.

Alderman John Taylor credited Cooper with helping clean up Canton by having residents remove junk cars from city streets and trash from lots. Cooper also recently helped the city develop a land-use plan and took over the city's zoning and building permit operations.

Officers wouldn't identify a second person injured. They said the injury wasn't serious.

"It was like a chain-reaction rear-end. It went down the line. They just rear-ended each other," Sipp said.

Traffic on both sides of the interstate was slowed for two hours as firefighters doused flames, rescued Cooper's body and cleared the interstate of debris.

■ Clarion-Ledger Staff Writer Deborah Douglas contributed to this report.

In Conclusion

- Use PC sparingly and responsively and there won't be any problems.
- PC is a privilege and can be revoked if abused.
- Pay attention to your clock and never try to cheat your hours. You are only putting yourself, the company and others at risk.

EverGreen
Industries, Inc.